



OXFORDWALL™

DEMARCATION

Water-filled barrier which is hi-vis for traffic delineation, and is fast and easy to deploy.

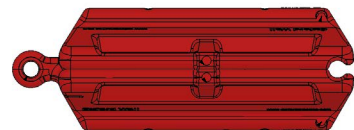
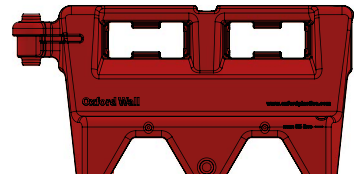
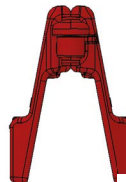
PRODUCT RANGE



OXFORDWALL™

Usage Benefits

- ▶ Withstands high winds when water-filled to increase barrier weight up to 20kg
- ▶ Clearly define access and thoroughfares in high traffic area
- ▶ Heavy, durable solution for robust installations
- ▶ Ensures mandated physical distance measures
- ▶ Lightweight (when empty) for easy transport and storage by 1 person
- ▶ Protect site staff and pedestrians against risk factors
- ▶ Easy to carry internal handholds which also increase wind-resistance
- ▶ Create hi-vis barrier systems that won't fade



COMPLIANCE CODES

Safety at Street Works and Road Works (Red Book), Traffic Signs Manual (Chapter 8), BS 8442:2015, BS EN 13422:2019

Product No.	O9169
Width	395mm
Length	1100mm
Height	600mm
Weight	8kg
Quantity / Pallet	18
Colour	White Red

Product No.	O687
Width	395mm
Length	1100mm
Height	1600mm
Weight	11.5kg
Quantity/Pallet	18
Colour	Silver

