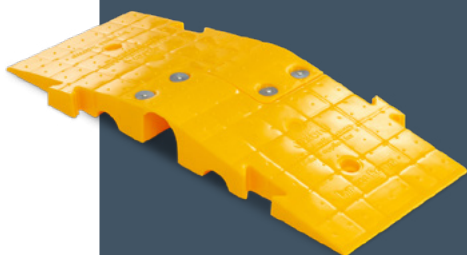




BYPASS RAMP

ASSEMBLY GUIDE

A guide to manually assembling the Bypass Ramp



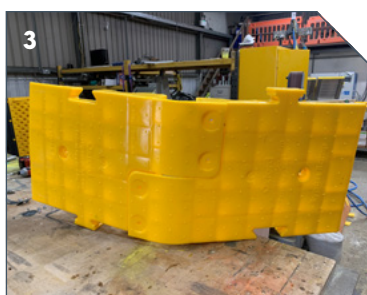
Tools required:

Impact driver, M 8 socket,
Socket extender, T-Bar.



Parts required:

2 x O919 Bypass Ramp Half,
4 x M 8 x 30. socket button head screw,
4 x M 8 nyloc nut, 8 x M 8 50 washer.



Retrieve two Bypass Ramp Halves and lay them on their side, ensuring they slot together. Front as shown.



Back as shown.



Place an M 8 x 50 washer in the recess on the top face of the Bypass Ramp and insert an M 8 x 30 socket button head screw through from the top face side.



Using another M 8 x 50 washer and an M 8 nyloc nut, fasten this from the underside hand-tight.

Repeat this process for all 4 fixing holes on the two Bypass Ramp Halves.



Once all 4 sets of fixings are in place hand-tight, use the T-bar to hold the screw in place while you tighten the nut using the impact driver. You will require an extender in order to reach the nut.

