



# TEMPORARY FENCE WEIGHT





# CONTENTS

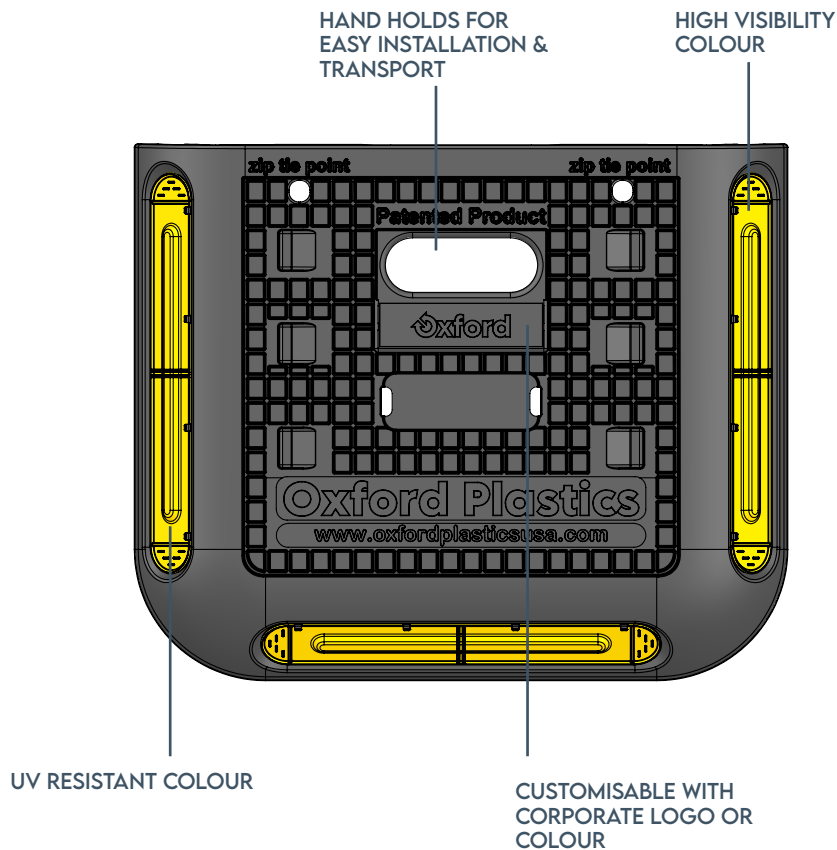
## PAGE

3	<b>Features</b>
4	<b>What problem does it solve</b>
5	<b>Dimensions and weights</b>
6	<b>Wind resistance</b>
7	<b>Wind data scale specifications</b>
8	<b>Inspection and maintenance</b>
9	<b>Installation and safe handling</b>
10	<b>Recyclability</b>
11	<b>Associated products</b>
12	<b>Contact information</b>





# FEATURES



## ROBUST

Fits securely over most metal stands and OxStand, keeping fence panels upright.

Flexibility to stack multiple Temporary Fence Weight when heavy wind situations warrant more ballast.

Non-metal construction reduces theft.

Reduce callouts due to fences falling over.

## SAFE & EASY TO USE

Carry multiple Temporary Fence Weight at once using the internal handles.

Quick to install.

Reduce trip hazards with the low profile and hi-vis edges.

Stackable for ease of storage and transportation.

## EXTRAS

Colour customisable, MOQs apply.

A closed loop recycling product: made from recycled PVC.

Can be customised with customer logos, MOQs apply.



## WHAT PROBLEMS DOES IT SOLVE



### ALTERNATIVE SAND BAG FENCING WEIGHT

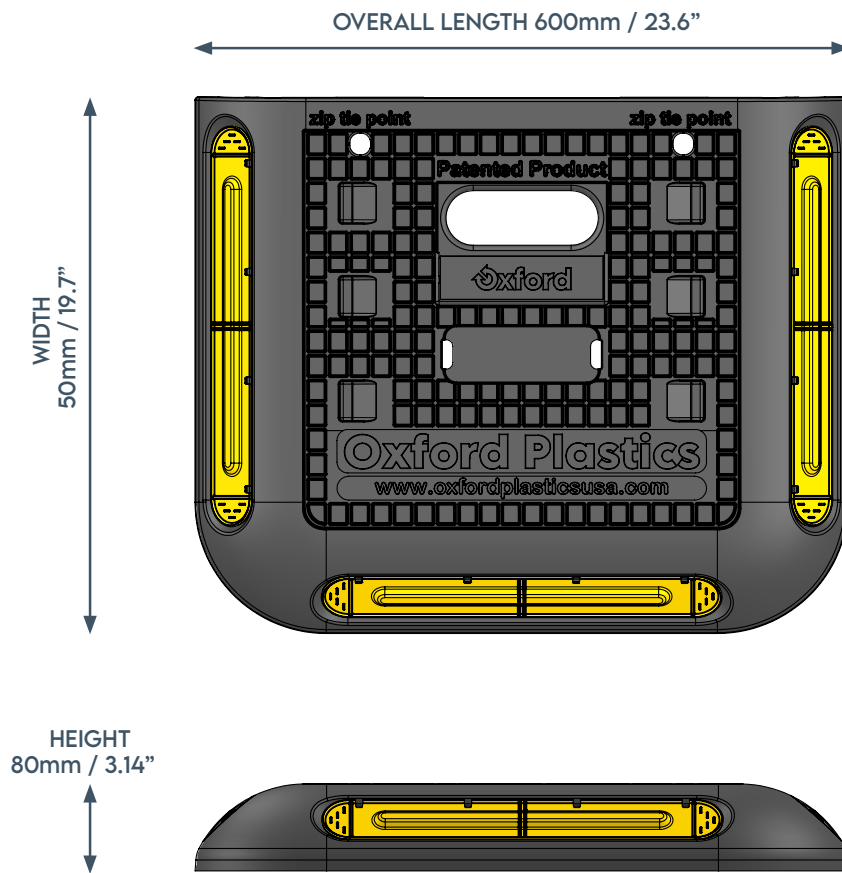
Hi-vis ballast weight for temporary fencing.

The alternative to sandbags, which does not decompose or leave debris on site. Unlike sandbags, Temporary Fence Weight is durable and reusable, time and time again.



# DIMENSIONS AND WEIGHTS

## TEMPORARY FENCE WEIGHT 13.6kg / 30lbs



**Part Name**

Temporary Fence Weight

**Product Code**

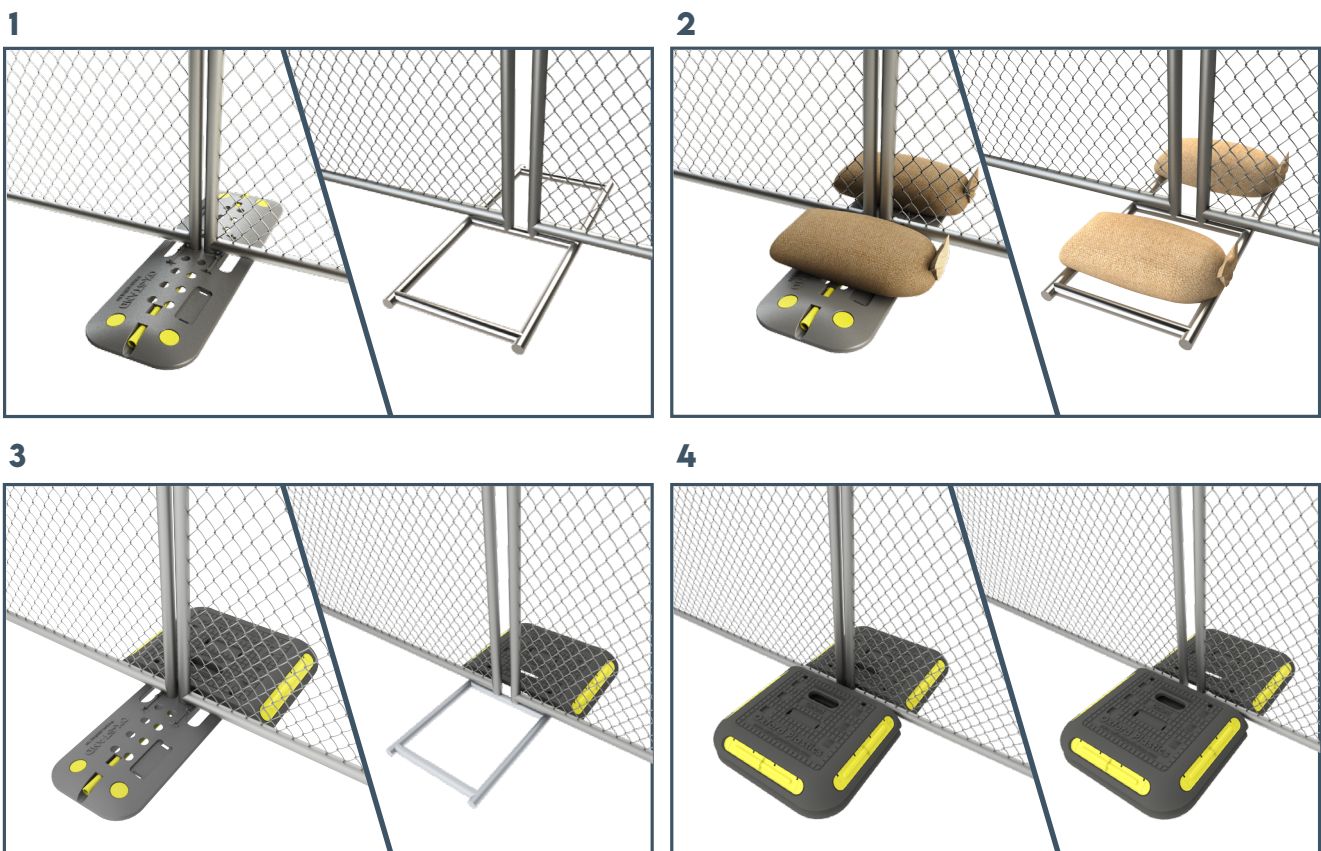
O203



# WIND RESISTANCE

The Oxstand and Temporary Fences can be configured to withstand windspeeds as shown below.

## OXSTAND & TEMPORARY FENCE CONFIGURATIONS FOR FOLLOWING SPEEDS:



Configuration	Description	Windspeeds		
		20mph	40mph	60mph
1	OxStand (or Metal Tube Stand)	✓		
2	OxStand (or Metal Tube Stand) and 30Kgs of Sand Bags	✓	✓	
3	OxStand (or Metal Tube Stand) with 1 Temporary Fence Weights	✓	✓	
4	OxStand (or Metal Tube Stand) with 3 Temporary Fence Weights	✓	✓	✓



# WIND DATA SCALE SPECIFICATIONS

## WIND CLASSIFICATIONS FOR BS8442

Wind Class	Meters per second (m/s)	Mile per hour (mph)
Class A	26.3	59
Class B	17.6	39.6
Class C	8.7	19.6

## CLASSIFICATION AND LABELLING OF UNITS

The manufacturer shall indicate the mass ballast to be added to each barrier assembly to resist a specified class of wind speed, depending upon the barrier configuration and the level of wind resistance chosen.

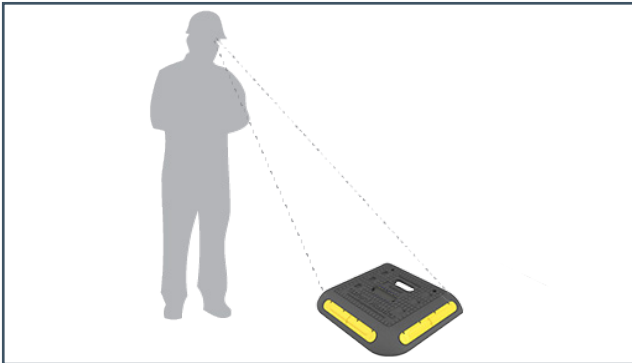
## BEAUFORT SCALE, WIND FORCE OR GALE FORCE

<b>Force 2</b>	8-12mph	Gentle breeze, leaves and small twigs in constant motion, wind extends light flag
<b>Force 3</b>	13-18mph	Moderate breeze, raises duct loose paper, small branches are moved
<b>Force 5</b>	19-24mph	Fresh breeze, small trees in leaf begin to sway, crested wavelets form on inland water
<b>Force 6</b>	25-31mph	Strong breeze, large branches in motion, whistling heard in telegraph wires, umbrellas difficult
<b>Force 7</b>	32-38mph	Near gale, walking noticeably hampered
<b>Force 8</b>	39-46mph	Gale, branches break, walking very difficult
<b>Force 9</b>	47-54mph	Severe gale, slates blown off roofs
<b>Force 10</b>	55-63mph	Storm, trees up rooted



## INSPECTION AND MAINTENANCE

Care for the product by following the below guidance:



Inspect each product for signs of damage, between every installation.



Clean product between every installation to remove debris.



When storing and transporting, ensure the Temporary Fence Weight is stacked on top of each other.

### SIGNS OF DAMAGE

Cracks in the black or yellow section indicate it has been damaged through improper use.

The product should lay flat on the ground depending on the ground conditions. A visibly bent product also indicates it has been damaged through improper use.

These products need to be disposed of.



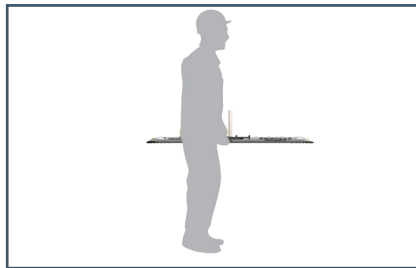
# INSTALLATION AND SAFE HANDLING

Prior to installing the Temporary Fence Weight

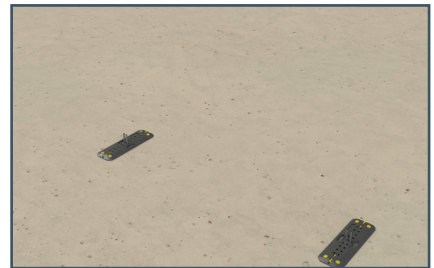
1. Complete a Site Specific Risk Assessment at the start of the project.
2. Inspect Temporary Fence Weight for damage – do not use damaged products



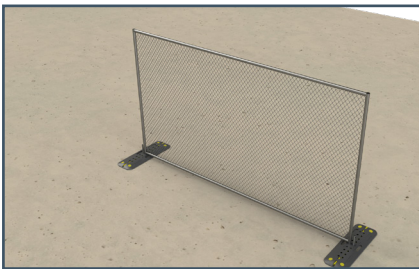
Assess ground condition to ensure it's suitable for fencing.



Use either OxStand or metal tube stand to place fence.



Position OxStand or metal tube stands on the ground.



Place metal fence onto the metal risers on the OxStand or metal tube stand.



Repeat process until required area is fenced off.



Place Temporary Fence Weight on OxStand or metal tube stand for ballasting.

## RECYCLABILITY



### MATERIALS

Temporary Fence Weight is made from recycled PVC and HDPE and is fully recyclable.

Contact Oxford Plastics for returning end of life products.

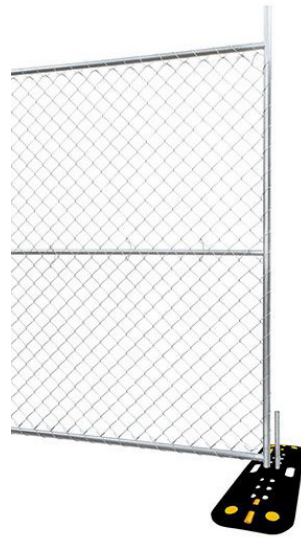


# ASSOCIATED PRODUCTS

When setting up a street works site, other Oxford Plastics solutions can be used to ensure compliance is achieved. Browse our Chapter 8 solutions; including advanced barrier systems, trench covers, road plates, wheelchair ramps and street works signs.



**ADVANCED BARRIER SYSTEMS**



**TEMPORARY FENCING**



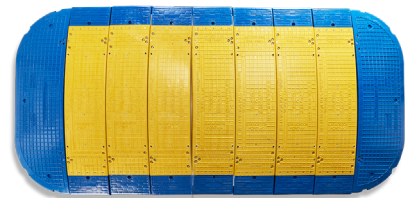
**GROUND PROTECTION**



**WHEELCHAIR RAMPS**



**TRENCH COVERS**



**ROAD PLATES**



## CONTACT INFORMATION

### UK & R.O.W

Oxford Plastic Systems Ltd  
Unit T2, Enstone Business Park  
Enstone,  
Chipping Norton  
Oxfordshire  
OX7 4NP  
United Kingdom

[sales@oxfordplastics.com](mailto:sales@oxfordplastics.com)  
Tel: +44(0)1608 678888

### USA

Oxford Plastic Systems LLC  
1011 Centre Rd,  
Suite 312,  
Wilmington  
DE  
19805  
USA

[info@oxfordplasticsusa.com](mailto:info@oxfordplasticsusa.com)  
1-800-567-9182

